

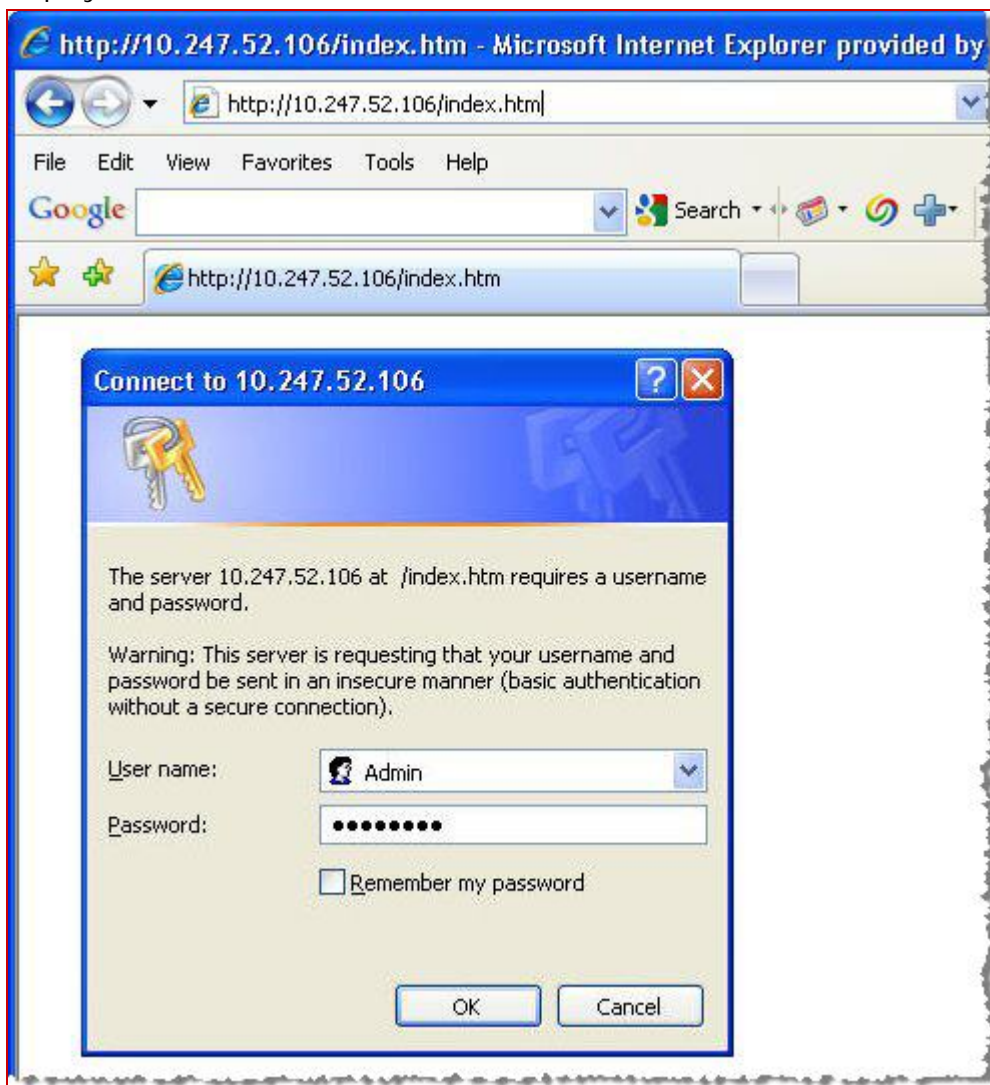
Innomedia Talksmart (ATA) Quick Start Guide

Line Registration, Disabling Provisioning and Enabling Procedures

This quick start guide provides you with procedures to register your device, disable device provisioning and enable your phone lines with the Innomedia VoIP ATA device once it has been connected to your phone.

To register the lines:

1. Pick up the phone handset and dial *****1** and write down the IP address announced on the phone. You will enter the IP address as the URL in step 2 and again when you enable the line(s).
2. Open a browser window and enter the URL: **http://<IP address>**. A connection login window displays.



3. Enter **Admin** in the User name field and **password** in the Password field to display the Innomedia page. Make sure you enter the user name and password exactly as shown in this step as the user name and password are case sensitive.

4. Click the **VoIP** link in the sidebar menu to display the submenus.

The screenshot shows the Innomedia web interface for MTA 6328-2Re. On the left is a sidebar menu with the Innomedia logo and the tagline "Connecting Your Worlds." The menu items are: Logout, Information, VoIP (highlighted), Config File, SIP Proxy, User Account, Management, and IP Network. The main content area displays system information:

- Image Version: V4.1.3
- BBS Version: V7.3.7
- Controller Code Version: V4.1.3 6328-2Re Wed Aug 30 16:54:15 2006
- DSP Code Version: V2.4.26 07/31 12:21 2006
- SIP Stack Version: V2.9.129
- System Up Time: 00hours, 07minutes, 50seconds ago

At the bottom, it says "Copyright© 1998-2006 InnoMedia, Inc. All rights reserved."

5. Click the **SIP Proxy** link to display the configuration page.

The screenshot shows the "Configure SIP Proxy & Preferred CODECs Settings" page. The sidebar menu is the same as in the previous screenshot, with "SIP Proxy" highlighted. The main content area contains the following configuration fields:

- SIP Proxy: [Empty text box]
- Use Outbound Proxy
- SIP Local Signaling Port: 5060
- SIP Domain: [Empty text box]
- Registration Expiration Time (sec.): 3600
- Preferred CODECs List:
 - PCMU/8000
 - PCMA/8000
 - G729A/8000
 - G723/8000
 - G726-32/8000
 - G728/8000
 - NONE-

At the bottom right, there are "Save" and "Reset" buttons.

6. Enter **byod1.net2phone.com** in the SIP Proxy field. Make sure that the **Use Outbound Proxy** checkbox is selected, that **5060** displays in the SIP Local Signaling Port field and that **byod1.net2phone.com** displays in the field. Do **not** change the remainder of the default values. Use the following image to guide you.

MEDIA
Connecting Your Worlds.

[Logout](#)
[Information](#)
[VoIP](#)
[Config File](#)
[Config File](#)
[SIP Proxy](#)
[User Account](#)
[Management](#)
[IP Network](#)

Configure SIP Proxy & Preferred CODECs Settings

SIP Proxy:

Use Outbound Proxy

SIP Local Signaling Port:

SIP Domain:

Registration Expiration Time (sec.):

Preferred CODECs List:

- PCMU/8000 ▾
- PCMA/8000 ▾
- G729A/8000 ▾
- G723/8000 ▾
- G726-32/8000 ▾
- G728/8000 ▾
- NONE- ▾

7. Click the **Save** button and click **OK** in the "Save entries to flash memory" dialog box.
8. Click the **User Account** link in the sidebar menu to display the page.

INNO MEDIA
Connecting Your Worlds.

[Logout](#)
[Information](#)
[VoIP](#)
[Config File](#)
[SIP Proxy](#)
[User Account](#)
[Management](#)
[IP Network](#)

Configure User Account

Line No.

User ID

User Password

Confirm Password

User Name

Authentication ID

Use Hot Phone Number:

Hot Phone Number:

Enable T38 FAX

9. Make sure **Line 1** is selected from the dropdown list.
 10. Enter the 10-digit user ID and the 4-digit PIN (password) supplied by Net2Phone in the appropriate fields making sure you re-enter the password in the Confirm Password field. Click the **Save** button.
- Repeat steps 9 and 10 if you need to register a second line and do **not** close the Configuration User Account page – you will need to access it later to disable the device provisioning.

To disable provisioning:

1. Click the **IP Network** sidebar menu link in the Innomedia web page to expand the submenus.
2. Click the Provisioning Setting submenu link to display the provisioning page.

INNO MEDIA
Connecting Your Worlds.

MTA 6328-2Re

Configure Provisioning Setting

Please complete the following form to define or modify the provisioning settings.

Enable Provisioning :

Server Name :

Port number :

- Check the box if you would like to enable provisioning function.
- Enter the provisioning server name.
- Enter the port number.
- Modification will **not** take effect unless you click on the **Save & Reboot** button to save to flash memory and reboot.
- Click on the **Reset** button to restore old entries.

Logout

[Information](#)

[VoIP](#)

[Management](#)

[IP Network](#)

[Interface Setting](#)

[Provisioning Setting](#)

[SNMP Setting](#)

[Voice QoS Settings](#)

[PPPoE Setting](#)

[PPPoE Status](#)

3. Make sure the **Enable Provisioning** check box is deselected and click the **Save & Reboot** button.

To enable the lines:

1. Select **Start** -> **Run** from your taskbar.
2. Enter **telnet <IP address>** in the Run window to open a telnet window where IP address is the IP address entered as the URL in your browser window.
3. When prompted enter **Admin** as the user name and **password** as the password.
4. When the system displays a blank line, enter **Mp**.
5. When prompted to change the configuration, enter **y**.
6. When prompted to enable Line 1, enter **y**.
7. When prompted to enable Line 2, enter **y** if you are enabling a second line – otherwise, enter **n**.
8. When prompted to permanently store the changes, enter **y**.
9. At the main command prompt, enter **R** to reboot the device.

The device reboots and your changes are saved.

For each line that is enabled and properly configured with an account, Net2phone recommends (as a precautionary measure) that you verify that the account on each line is registered properly using the registration status feature accessible from the Innomedia Web configuration manager.

To access this page, click the **Information** link in the sidebar menu, followed by the **Register Status & Critical Messages** link below it to display the Innomedia information page.

MTA 6328-2Re

SIP Proxy Registration Status

Line 1	Line 2
Registered	Registered

Critical Messages

```
Init
Init done
```