

SIPURA SPA-2100

Configuration Guide

Version 1.0

All Rights Reserved.

Copyright © 2005

The use, disclosure, modification, transfer, or transmittal of this work for any purpose, in any form, or by any means, without the written permission of the copyright holder, is strictly forbidden.

*Sipura SPA-2100 Configuration Guide
Version 1.0*

May 2005

Disclaimer

The content of this manual is subject to change without notice and should not be construed as a commitment by the manufacturer, distributor, or service provider. This manual is furnished for informational use only and the manufacturer, distributor, or service provider assumes no responsibility for any errors or inaccuracies that may appear herein.

Any services provided through this equipment are not intended to replace or be a substitute for primary line voice services or Plain Old Telephone Service ("POTS") and are not meant to provide guaranteed Automatic Number Identification or Automatic Location Information capabilities associated with 911 or E911 services or to permit access to 411 directory assistance services. The manufacturer, distributor, or service provider will not be liable for any damages, expenses, liabilities, risks, or harms arising out of or related to the services provided through this equipment.

Table of Contents

- 1. Introduction 1**
- 2. Upgrading the SPA-2100 Firmware 2**
 - 2.1 Configuring the SPA-2100 for Firmware Upgrades..... 2
 - 2.1.1 *Upgrading the Firmware* 3
- 3. Device Configuration 5**

1. Introduction

This document is a configuration guide for the Sipura SPA-2100. Your SPA-2100 device must have firmware version 2.0.5(c) configured on it in order to complete calls on the network. This guide provides instructions for upgrading the SPA-2100 to the correct software version and configuration of device settings for easy access to the calling network.

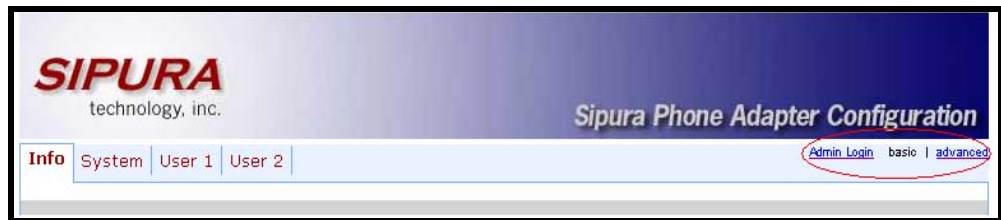
2. Upgrading the SPA-2100 Firmware

The following section provides instructions for upgrading the SPA-2100 to firmware version 2.0.5(c). If your device is already configured with this firmware version, skip ahead to section 3.0 Device Configuration.

2.1 Configuring the SPA-2100 for Firmware Upgrades

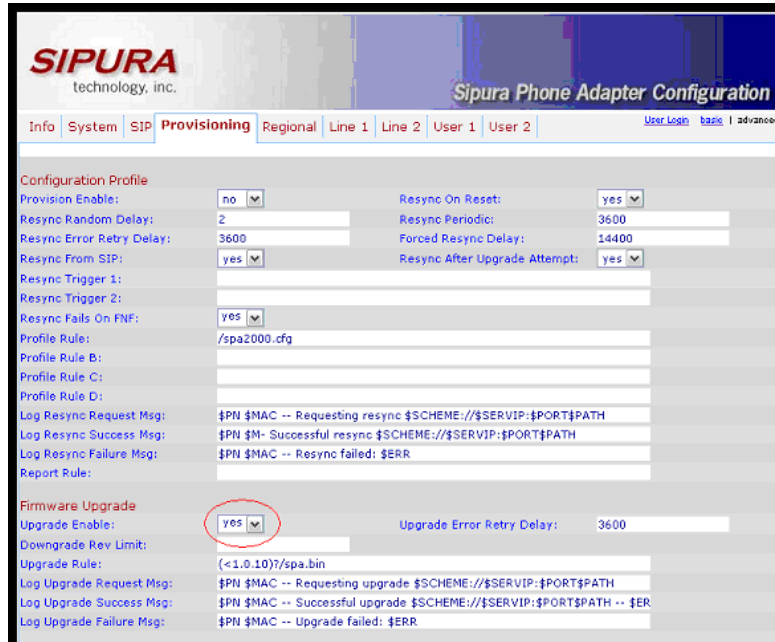
In order for the SPA-2100 to upgrade properly, you must first set the **Upgrade Enable** field to **yes**.

1. From a PC connected to the PC port on the SPA-2100, connect to the device web interface by entering `http://192.168.0.1` in your web browser.
2. Click on the **Admin Login** link, and then click the **advanced** configuration link.



Sipura Web Interface Main Window

3. Click the **Provisioning** tab.
The Provisioning page displays.



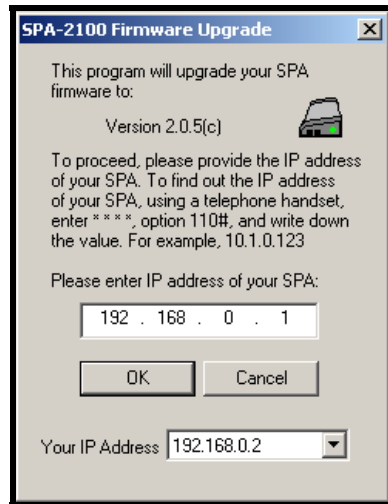
Provisioning Tab – Upgrade Enable Field Set to Yes

4. In the *Firmware Upgrade* section, click the **Upgrade Enable** drop-down menu, and select **yes**.
5. Click the **Submit All Changes** button at the bottom of the page to save the settings.

2.1.1 Upgrading the Firmware

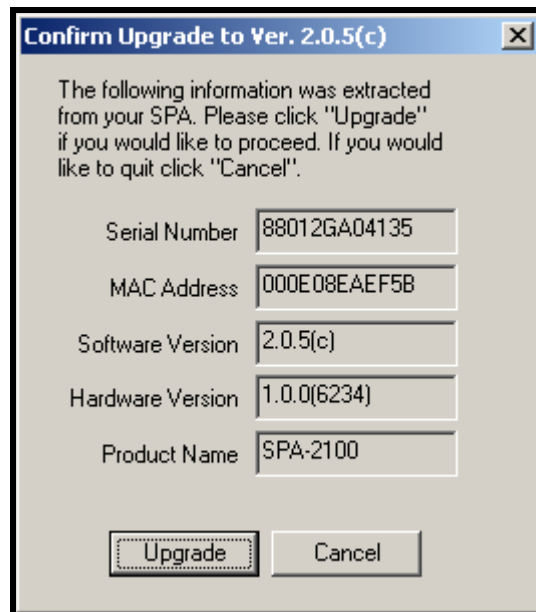
To upgrade the SPA-2100 firmware:

1. Copy **spa2100-2.0.5(c).exe** and **spa2100-2.0.5(c).bin** from the zip file to your PC desktop.
2. Double-click **spa2100-2.0.5(c).exe**.
The SPA-2100 Firmware Upgrade window displays.
3. Click the **Continue** button.
The SPA-2100 Firmware Upgrade window displays.



SPA-2100 Firmware Upgrade Window

4. Enter the IP address of the SPA-2100 that you want to upgrade, and then click the **OK** button.
The Confirm Upgrade window displays.



Confirm Upgrade Window

5. Click the **Upgrade** button.
The Uploading Target Firmware window displays.



Upgrade Status Window

6. When the SPA-2100 has been upgraded successfully, click the **OK** button in the Upgrade Successful window.



Upgrade Successful Window

3. Device Configuration

To configure the SPA-2100 for outbound and inbound calling:

1. From a PC connected to the PC port on the SPA-2100, connect to the device web interface by entering <http://192.168.0.1> in your web browser.
2. Click on the **Admin Login** link, and then click the **advanced** configuration link.
3. Click the **Line1** or **Line2** tab, and in the **NAT Settings** section, set **NAT Keep Alive Enable** to no.

Field	Value
NAT Keep Alive Enable	no

4. In the **Proxy and Registration** section, set the proxy field to **byod1.net2phone.com**.

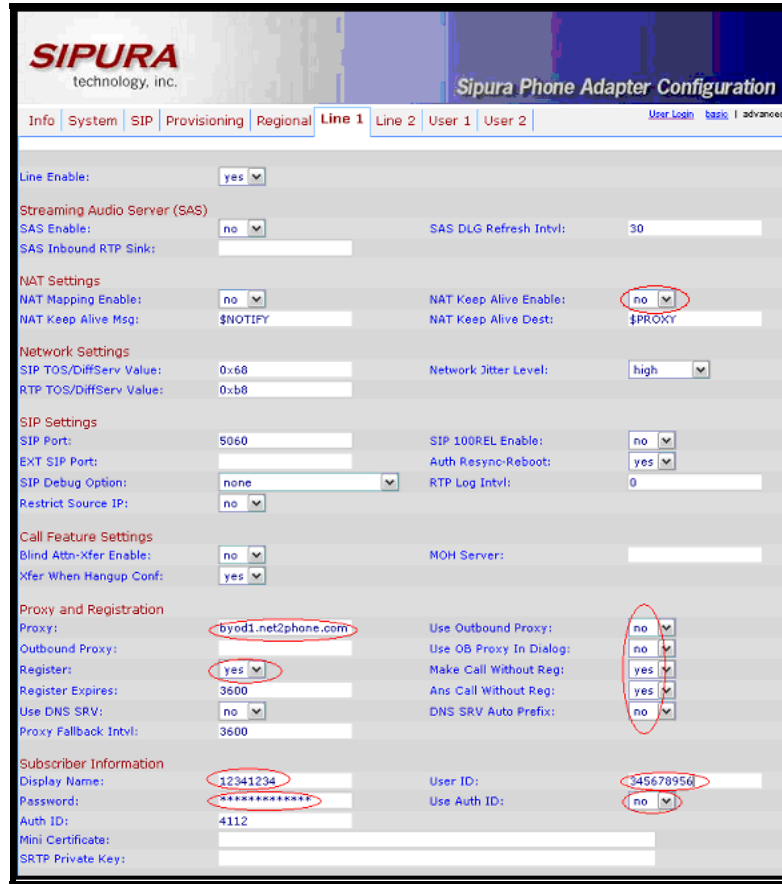
Field	Value
Proxy	byod1.net2phone.com



IMPORTANT: To ensure inbound calls are completed successfully, verify the "Register" field on the Line 1/Line 2 tab is set to "yes".

5. In the **Proxy and Registration** section of the Line1/2 tab (pictured below), set the values as indicated below:

Field	Value
Use Outbound Proxy	no
Use OB Proxy In Dialog	no
Make Call Without Reg	yes
Ans Call Without Reg	Yes
DNS SRV Auto Prefix	no



Line1/2 Window – Proxy and Registration and Subscriber Information Sections

- In the **Subscriber Information** section, enter the **Display Name** as displayed in the table below, depending on whether you have outbound only or inbound/outbound service:

Service Type	Field	Display Name Value
OUTBOUND SERVICE ONLY	Display Name (Line 1)	NO_DID1
	Display Name (Line 2)	NO_DID2
INBOUND SERVICE	Display Name (Line 1)	Enter the telephone number configured on Line 1.
	Display Name (Line 2)	Enter the telephone number configured on Line 2.

- In the **User ID** field enter your account number. In the **Password** field enter your PIN.



IMPORTANT: You must have a different account and PIN configured on Line 1 and Line 2.

- Select **no** in the **Use Auth ID** drop-down menu.

9. In the **Audio Configuration** section as shown in the Line1/2 window screen on the following page, change the following settings:

Field	Value
Use Pref Codec Only	no
G729a Enable	yes
G723 Enable	yes
G726-16 Enable	no
G726-24 Enable	no
G726-32 Enable	no
G726-40 Enable	no
DTMF Process INFO	no
DTMF Process AVT	yes
DTMF Tx Method	AVT

The screenshot displays the configuration interface for the SIPura SPA-2100. It is divided into several sections:

- Supplementary Service Subscription:** A grid of settings, all currently set to 'yes'.
- Audio Configuration:** A grid of settings. The following settings are circled in red:
 - Preferred Codec: G723
 - Use Pref Codec Only: no
 - G729a Enable: yes
 - G723 Enable: yes
 - G726-16 Enable: no
 - G726-24 Enable: no
 - G726-32 Enable: no
 - G726-40 Enable: no
 - DTMF Process INFO: no
 - DTMF Process AVT: yes
 - DTMF Tx Method: AVT
- Dial Plan:**
 - Dial Plan: (*xx|[3469]11|0|00|[2-9]xxxxx|1xxx[2-9]xxxxx|xxxxxxxxxxxxx.)
 - Enable IP Dialing: no
- FXS Port Polarity Configuration:**
 - Idle Polarity: Forward
 - Caller Conn Polarity: Reverse
 - Callee Conn Polarity: Reverse

Buttons for 'Undo All Changes' and 'Submit All Changes' are visible at the bottom of the configuration area.

Line1/2 Window – Audio Configuration and Dial Plan Sections

10. In the **Dial Plan** section, change the **Dial Plan** to fit the dialing pattern in your country. The dialed number must start with '1' for US calls and '011' for non-US calls. Refer to the Sipura manual to customize your dial plan.
11. Click the **Submit All Changes** button to save the settings.