

<tape\_format> dig

# Max PVN<sup>TM</sup> (Private Voice Network)

Version 1.0

**MAX PVN**

Private  
Voice  
Network

*The MAX PVN is a private voice network solution  
for the Net2Phone MAX gateway*

## User's Guide

The specifications and information regarding the products in this manual are subject to change without notice. All statements, information, and recommendations in this manual are believed to be accurate but are presented without warranty of any kind, express or implied. Users must take full responsibility for their application of any products.

The software license and limited warranty for the accompanying product are set forth in the information packet that shipped with the product and are incorporated herein by this reference. If you are unable to locate the software license or limited warranty, contact your Net2Phone representative for a copy.

The following information is for FCC compliance of Class A devices: This equipment has been tested and found to comply with the limits for a Class A digital device, pursuant to part 15 of the FCC rules. These limits are designed to provide reasonable protection against harmful interference when the equipment is operated in a commercial environment. This equipment generates, uses, and can radiate radio-frequency energy and, if not installed and used in accordance with the instruction manual, may cause harmful interference to radio communications. Operation of this equipment in a residential area is likely to cause harmful interference, in which case users will be required to correct the interference at their own expense.

The following information is for FCC compliance of Class B devices: The equipment described in this manual generates and may radiate radio-frequency energy. If it is not installed in accordance with Net2Phone's installation instructions, it may cause interference with radio and television reception. This equipment has been tested and found to comply with the limits for a Class B digital device in accordance with the specifications in part 15 of the FCC rules. These specifications are designed to provide reasonable protection against such interference in a residential installation. However, there is no guarantee that interference will not occur in a particular installation.

Modifying the equipment without Net2Phone's written authorization may result in the equipment no longer complying with FCC requirements for Class A or Class B digital devices. In that event, your right to use the equipment may be limited by FCC regulations, and you may be required to correct any interference to radio or television communications at your own expense.

You can determine whether your equipment is causing interference by turning it off. If the interference stops, it was probably caused by the Net2Phone equipment or one of its peripheral devices. If the equipment causes interference to radio or television reception, try to correct the interference by using one or more of the following measures:

- Turn the television or radio antenna until the interference stops.
- Move the equipment to one side or the other of the television or radio.
- Move the equipment farther away from the television or radio.
- Plug the equipment into an outlet that is on a different circuit from the television or radio. (That is, make certain the equipment and the television or radio are on circuits controlled by different circuit breakers or fuses.)

Modifications to this product not authorized by Net2Phone could void the FCC approval and negate your authority to operate the product.

Notwithstanding any other warranty herein, all document files and software of these suppliers are provided "as is" with all faults. Net2Phone and the above-named suppliers disclaim all warranties, expressed or implied, including, without limitation, those of merchantability, fitness for a particular purpose and non-infringement or arising from a course of dealing, usage, or trade practice.

In no event shall Net2Phone or its suppliers be liable for any indirect, special, consequential, or incidental damages, including, without limitation, lost profits or loss or damage to data arising out of the use or inability to use this manual, even if Net2Phone or its suppliers have been advised of the possibility of such damages.

Net2Phone Max 410/420/430, net2phone, and the Net2Phone logo are registered trademarks of Net2Phone, Inc. in the US and certain other countries. All other trademarks mentioned in this document are the property of their respective owners.

---

*Net2Phone Max PVN User Guide*

Rev. 1.0 March 2003

Copyright © 2001, Net2Phone, Inc. All rights reserved

The use, disclosure, modification, transfer, or transmittal of this work for any purpose, in any form, or by any means, without the written permission of Net2Phone, is strictly forbidden.

---

Printed in Korea

---

## Table of Contents

---

<b>1.0</b>	<b>OVERVIEW.....</b>	<b>1</b>
1.1	SYSTEM FEATURES .....	1
1.2	ABOUT THIS GUIDE.....	1
1.3	SYSTEM REQUIREMENTS .....	2
1.3.1	<i>Operating System</i> .....	2
1.3.2	<i>Server Operation Environment</i> .....	2
1.3.3	<i>Client Operation Environment</i> .....	2
1.4	SUMMARY OF PRODUCT CAPABILITIES .....	2
<b>2.0</b>	<b>INSTALLING AND UNINSTALLING THE MAX PVN SOFTWARE .....</b>	<b>3</b>
2.1	INSTALLING THE MAX PVN SOFTWARE .....	3
2.2	UNINSTALLING THE MAX PVN SOFTWARE.....	4
<b>3.0</b>	<b>SETTING UP YOUR MAX PVN NETWORK .....</b>	<b>6</b>
3.1	CHECKING SYSTEM SETTINGS.....	6
3.1.1	<i>Hard Disk Power Setting</i> .....	6
3.1.2	<i>Firewall Setting (Windows XP Only)</i> .....	6
3.2	LOGGING INTO THE MAX PVN .....	7
3.2.1	<i>Adding an Account to the Max PVN</i> .....	9
3.2.2	<i>Adding a Device to the Max PVN</i> .....	9
3.3	LOGGING INTO THE MAX WEB MANAGER.....	10
3.3.1	<i>Obtaining the Max PVN Server IP Address</i> .....	11
3.3.2	<i>Configuring the Web Manager for Max Devices</i> .....	11
3.3.3	<i>Configuring the Web Manager for the IP Phone</i> .....	14
3.4	BACKING UP YOUR MAX PVN DATABASE .....	14
<b>4.0</b>	<b>USING THE MAX PVN SOFTWARE .....</b>	<b>15</b>
4.1	THE MAX PVN HOME PAGE .....	15
4.1.1	<i>Max PVN Menu System</i> .....	15
4.1.2	<i>System Information</i> .....	16
4.2	COMMON PAGE ELEMENTS .....	16
4.3	ACCOUNT MENU.....	17
4.3.1	<i>Account Status Page</i> .....	17
4.3.2	<i>Account Setup Page</i> .....	19
4.4	DEVICE MENU .....	22
4.4.1	<i>Device Status Page</i> .....	22
4.4.2	<i>Device Setup Page</i> .....	24
4.5	STATISTICS MENU .....	26
4.5.1	<i>Call History Page</i> .....	26
4.5.2	<i>Daily Statistics Page</i> .....	28
4.5.3	<i>Monthly Statistics Page</i> .....	30
4.6	SYSTEM MENU .....	32
4.6.1	<i>Configuration Page</i> .....	32
4.6.2	<i>Change Password Page</i> .....	34
<b>5.0</b>	<b>PLACING CALLS .....</b>	<b>35</b>
5.1	THE POUND KEY .....	35
5.2	PLACING CALLS TO THE PSTN .....	35
5.2.1	<i>Placing Calls to Destinations within North America</i> .....	35
5.2.2	<i>Placing International Calls</i> .....	35
5.3	MAX-TO-MAX CALLING.....	35
<b>6.0</b>	<b>APPENDIX A – OBTAINING THE LICENSE KEY AND SERIAL NUMBER (BETA VERSION ONLY) .....</b>	<b>36</b>
<b>7.0</b>	<b>INDEX.....</b>	<b>37</b>

---

---

## 1.0 Overview

---

Congratulations on your purchase of the **Net2Phone Max PVN!**

The Max PVN is the first intranet/Internet call management server that provides virtual PBX capabilities for small to mid-sized companies. It effortlessly connects satellite offices and telecommuters using Net2Phone-enabled gateways and IP phones. Calls within the private network are free, and for local and long distance calling, the Max PVN provides access to Net2Phone's network. In addition, the Max PVN provides robust management and monitoring tools that allow you to view the network activity, daily & monthly call statistics, and graphic representation of the data (color line, bar and 3D bar graphing are available).

The Max PVN offers all of these features while being much less expensive than other high-end intranet voice network offerings. The software runs on PCs with Windows operating systems, so there's no need to buy special hardware. Best of all, the Max PVN is quick and easy to install, set up, and configure.

This section provides an overview of the Max PVN's features and system requirements:

- ♦ System Features
- ♦ About this Guide
- ♦ System Requirements
  - Operating System
  - Server Operation Environment
  - Client Operation Environment

---

## 1.1 System Features

---

The Net2Phone Max PVN provides the following features:

- ♦ Free calls between Max gateways and IP phones on the same WAN
- ♦ Simply dial an extension number to access anyone on the network
- ♦ Dedicated WAN bandwidth results in even greater call quality
- ♦ Supports up to 150 simultaneous calls
- ♦ Low Net2Phone rates on worldwide calls to any phone
- ♦ Even lower rates on calls from one Max to another (even if not on the same WAN)
- ♦ Emulation of Net2Phone server, such as Doorman, Call Controller and OPAL server
- ♦ Use of Private IP address
- ♦ Account management for both real Net2Phone accounts (for PSTN calls) and private accounts (extension numbers in the private network)
- ♦ No restriction on either local or Net2Phone network calls  
In case of a Net2Phone network call, real Net2Phone accounts should be used

---

## 1.2 About This Guide

---

This User's Guide, as well as the other instructional literature that accompanies the Net2Phone Max PVN, is intended for people who have a moderate degree of experience installing networking equipment such as routers, hubs, servers, and switches, and are familiar with basic wiring and cabling practices.

## 1.3 System Requirements

### 1.3.1 Operating System

To install the Net2Phone Max PVN, you will need:

- ♦ Windows 2000 Professional, or
- ♦ Windows XP Professional  
(See Section 3.1.2 **Firewall Setting (Windows XP Only)** for special guidelines when setting up your Max PVN.)

### 1.3.2 Server Operation Environment

To use the Net2Phone Max PVN, you will need:

- ♦ **CPU** – Intel Pentium III 800 MHz or higher
- ♦ **Memory** – 256/512 MB or more
- ♦ **Hard drive** – 10 GB or more
- ♦ **LAN** – 10/100 Mbps LAN
- ♦ Dedicated public and static IP address required
  - Public IP address required for remote management capabilities (for the client, it enables remote administrative access and for Net2Phone, it enables remote technical support)
  - Static IP address required because the Doorman IP must be set to the Max PVN server's IP address (must be a constant location)
- ♦ UPS recommended, especially if power failure is a frequent problem in your area

### 1.3.3 Client Operation Environment

To manage the Net2Phone Max PVN, you will need:

- ♦ MS Internet Explorer 5.0 or later version Web browser

## 1.4 Summary of Product Capabilities

The following table illustrates the capabilities of each type of Max PVN. The version of Max PVN you chose should be able to accommodate your company's communication needs.

Max PVN Product	Number of Concurrent Calls	Number of Accounts/Ports
Max PVN 10	10	100
Max PVN 25	25	250
Max PVN 50	50	500
Max PVN 150	150	1500

## 2.0 Installing and Uninstalling the Max PVN Software

This section details the steps for installing and uninstalling the Max PVN software.

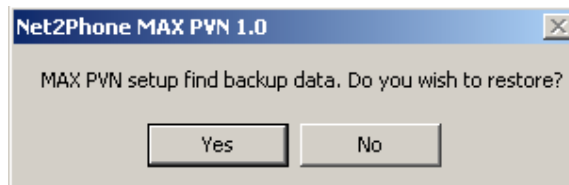
- Installing the Max PVN Software
- Uninstalling the Max PVN Software

### 2.1 Installing the Max PVN Software

1. Please place the CD-ROM onto the disc drive and execute the installation program (Net2Phone\_Max\_PVN-1.0.exe).

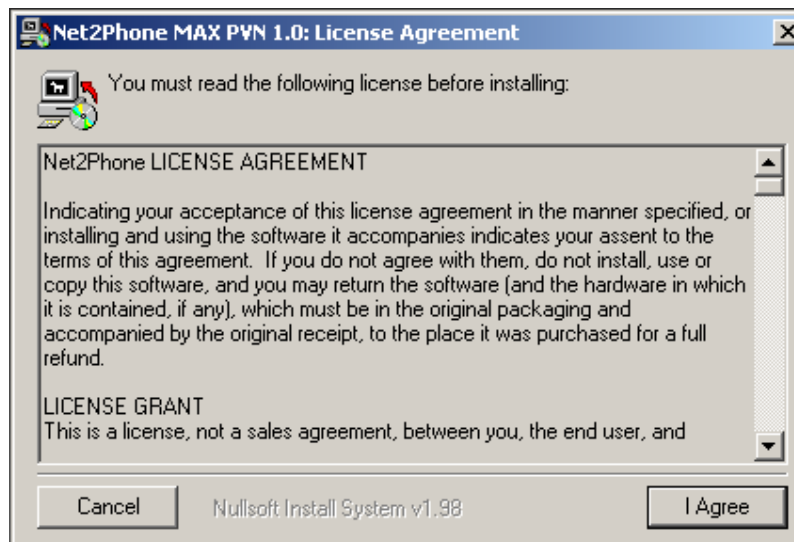
**NOTE:** If the platform is not Windows 2000, the installation will stop.

2. The install program will check for any previous backup data



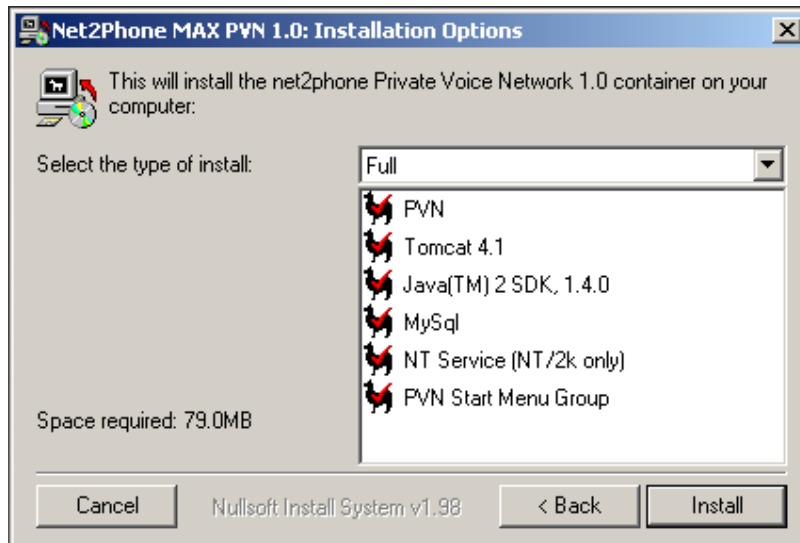
If backup data is found, you can decide to restore the data by clicking the **Yes** button. If you would prefer not to use the backup data, click the **No** button.

*The License Agreement window appears.*

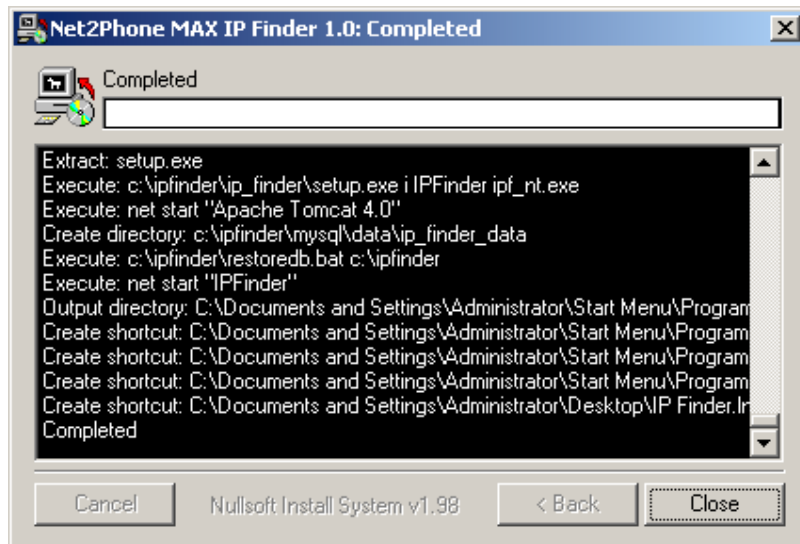


3. Read the License Agreement. If you agree to the terms, click the **I Agree** button to install the Max PVN.

*The Installation Options window appears.*



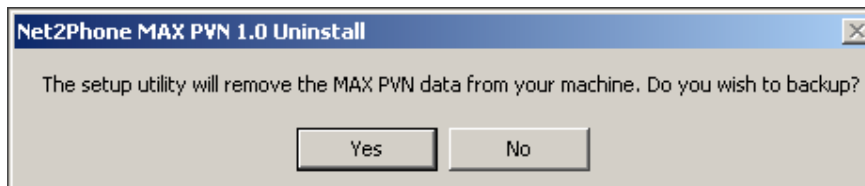
4. Click the **Install** button to start the installation.  
*The Max PVN 1.0 Completed window appears.*



5. To complete the installation, click the **Close** button.

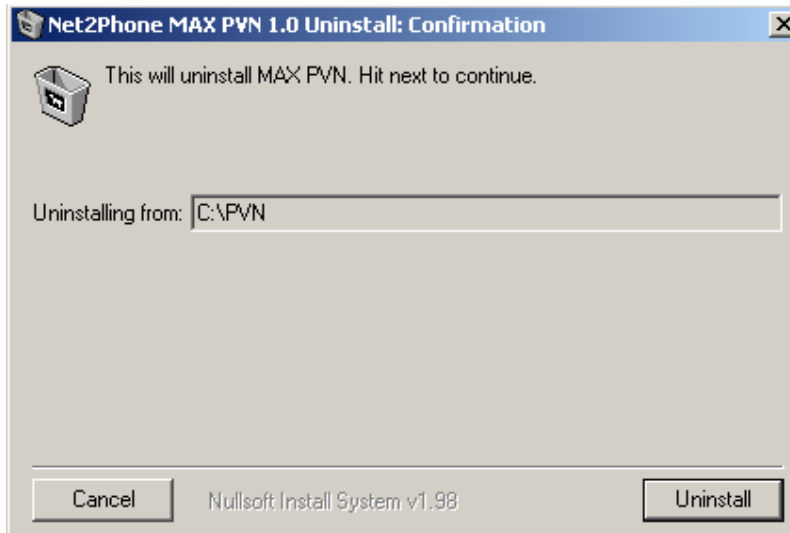
## 2.2 Uninstalling the Max PVN Software

1. Click the **Start** button on the taskbar at the bottom of your screen and select **Programs: Max PVN 1.0: Uninstall**.  
*The Uninstall dialog box appears.*



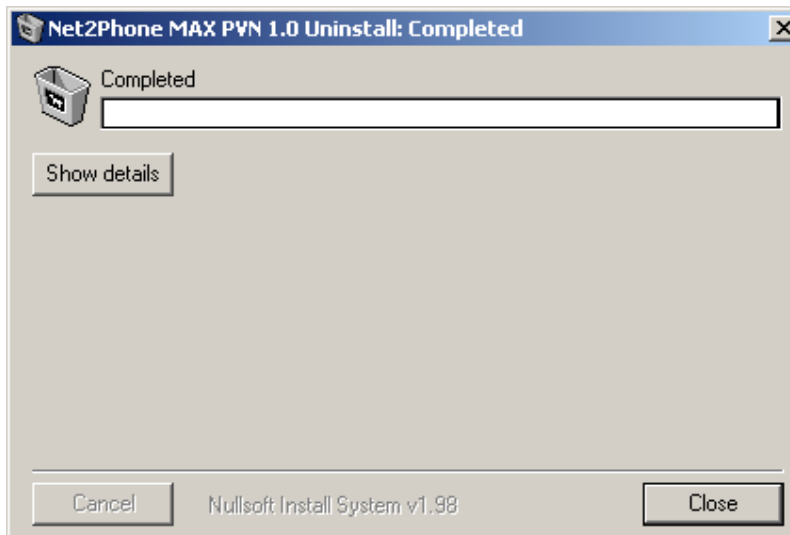
- The uninstall program checks for any database data on your PC. If data is found, you can decide to back up the data by clicking the **Yes** button. If you would prefer not to back up the data, click the **No** button.

*The Uninstall Confirmation window appears.*

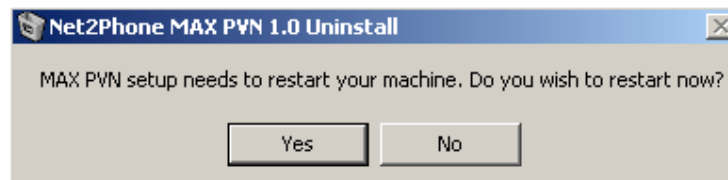


- To uninstall Max PVN, click the **Uninstall** button.

*The Uninstall Completed window appears.*



- To complete the uninstall, click the **Close** button.
- If the uninstall is completed successfully, the program will suggest that you reboot your PC. To restart your PC immediately, click the **Yes** button. If you would prefer to restart your PC later, click the **No** button.



---

## 3.0 Setting up Your Max PVN Network

---

This section covers the steps involved in setting up your Max PVN network.

1. Checking your system settings
  - Confirming your hard disk power setting
  - Confirming your firewall setting
2. Logging into the Max PVN
  - Adding an account
  - Adding a device
3. Logging into the Max Web Manager
  - Obtaining the Max PVN Server IP Address
  - Configuring the Web Manager for Max devices
    - ◆ Network configuration settings
    - ◆ Account configuration settings
    - ◆ Routing table configuration settings
  - Configuring the Web Manager for the IP Phone
    - ◆ Net2Phone configuration settings

Once you have completed each of these steps, your Max PVN will be ready to go!

---

### 3.1 Checking System Settings

---

Before you can set up the Max PVN network, you must check some of the system settings on the Max PVN server to make sure that the network will function properly.

---

#### 3.1.1 Hard Disk Power Setting

---

The Display Properties dialog box, accessed via the Control Panel, contains power settings for the PC's monitor and the hard disk. It is important to confirm that the hard disk will remain on at all times to maintain a fully operational network.

1. From the Control Panel, double-click **Display** to open the Display Properties dialog box.
2. Click the Screen Saver tab.
3. Click the **Power...** button at the bottom of the dialog box, in the Energy Saving Features section.
4. For the field labeled **Turn off hard disks**, confirm that the selected value is **Never**. If it is not, select **Never** from the dropdown menu.
5. Click the **OK** button to save the setting.
6. Click the **OK** button again to close the Display Properties dialog box.

---

#### 3.1.2 Firewall Setting (Windows XP Only)

---

If the Max PVN software is installed on a PC with Windows XP, you must confirm that the firewall is not enabled.

1. From the desktop, right-click the My Network Places icon and select Properties from the shortcut menu.
2. Right-click Local Area Connections and select Properties from the shortcut menu.
3. Click the Advanced tab.
4. Confirm that the **Internet Connection Firewall** checkbox is not checked.

## 3.2 Logging into the Max PVN

1. Open a browser window and enter the Max PVN IP address into your browser's URL field.

*The Max PVN Login page appears.*



**Figure 1 – Max PVN Login Page**

**NOTE:** The default user name is **admin** and the default password is **admin**.

2. **If you are using a USB hardware license key**, insert the license key into the USB slot on your PC and skip to Section 3.2.1, **Adding an Account**.  
*The Max PVN will automatically obtain the Serial Number and License Number from the USB hardware license key. You are now ready to add accounts.*
3. **If you are using a software license key for the Beta version only**, enter your user ID and password in the fields in the upper right corner of the screen (if you have no user ID or password, use the defaults), and click the **OK** button.  
*The Input Serial and License Number screen appears. Go to Section 6, **Appendix A – Obtaining the License Key and Serial Number** to get that information.*



Figure 2 – Input Serial and License Number Page

4. Enter the serial number and license number for your Max device (obtained from the procedure in Section 6, **Appendix A**) and click the **Update** button.  
The Max PVN Home Page displays.



Figure 3 – Max PVN Home Page

### 3.2.1 Adding an Account to the Max PVN

Now that you're logged into the Max PVN, the next step in setting up your network is to add accounts to the Max PVN. These accounts will be assigned to the devices that you register with the Max PVN in the next section.

It is a good idea to create a table or some other system of organizing your local account numbers (i.e., extension numbers). The table should consist of the names and/or locations requiring an extension and the extension number that you will be assigning.

**You will need:**

- ♦ Net2Phone account number(s) and PIN(s) for any accounts that will be making and/or receiving calls from outside the PVN network.
- ♦ Local account number (extension number) assignments.

**To add accounts to the Max PVN:**

1. Access the Account Setup page by clicking the **Account Setup** link on the Max PVN home page or by moving your mouse pointer over the Account box at the top of any page (a dropdown menu will appear) and then clicking the **Account Setup** menu option below.
2. Add accounts by populating the fields at the bottom of the page and clicking the **Insert** button after each account or set of accounts. For more information about each field, see Section 4.3.2.2, **Adding an Account**.  
*The added account(s) appear in the table on the Account Setup page.*

### 3.2.2 Adding a Device to the Max PVN

Once the accounts have been added, you must register all of your devices with the Max PVN, including all Max devices and the IP10 Phone.

**You will need:**

- ♦ The model type of each device you will be connecting to the Max PVN
- ♦ The IP address for each device (refer to the Max **User's Guide** for instructions on obtaining the IP address)
- ♦ Any additional information about each device, such as its physical location or the name of the person who owns the device

**To add devices to the Max PVN:**

1. Access the Device Setup page by clicking the **Device Setup** link on the Max PVN home page or by moving your mouse pointer over the Device box at the top of any page (a dropdown menu will appear) and then clicking the **Device Setup** menu option below.
2. Add devices by populating the fields at the bottom of the page and clicking the **Insert** button after each. For more information about each field, see Section 4.4.2.2, **Adding a Device**.  
*The added device appears in the table on the Account Setup page.*

### 3.3 Logging into the Max Web Manager

After you have added the accounts and devices to the Max PVN, you must log onto the Max Web Manager for each device to configure the network, port, and account settings.

The Max Web Manager is a tool you can use to configure your Max device(s). Each Max device has a corresponding Web Manager that you can access to view and change settings.

**You will need:**

- ♦ The IP address for each device (refer to the Max *User's Guide* for instructions on obtaining the IP address)
- ♦ User Name and Password for each device's Max Web Manager

Once you have this information, you are ready to log into the Max Web Manager through a Web browser, such as Internet Explorer.

**To log into the Max Web Manager from the Max PVN:**

1. Navigate to the Device Status page and click on the Gateway value for a particular device.  
*Another browser window opens and displays the enter page to the corresponding Max device's Web Manager.*
2. Click the enter text on the Max Web Manager Door page.  
*The Login dialog box appears.*
3. Enter the user name and password for the Max Web Manager and click the **OK** button.  
*The Max Web Manager site map page appears.*

**To log into the Max Web Manager from a browser:**

1. Open a new browser window and enter the Max device's IP address and port in the URL box.  
For example, if the Max device's IP address is http://150.150.55.156 and its port is 8888, you would type: `http://150.150.55.156:8888` into the browser's URL box.  
*The Max Web Manager Door page appears.*
2. Click the enter text on the Max Web Manager Door page.  
*The Login dialog box appears.*
3. Enter the user name and password for the Max Web Manager and click the **OK** button.  
*The Max Web Manager site map page appears.*

If you are configuring the settings for a Max device (e.g., Max 4, Max 4x0 series, Max 8, Max 8 Plus, Max 8/16, or Max T1/E1), follow the instructions in Section 3.3.1, **Configuring the Web Manager for Max Devices**. If you are configuring settings for an IP Phone, refer to Section 3.3.2, **Configuring the Web Manager for the IP Phone**.

### 3.3.1 Obtaining the Max PVN Server IP Address

#### To obtain the Max PVN server IP address:

1. Open a DOS window by going to Start: Programs: Accessories: Command Prompt.  
*The DOS window opens.*
2. At the c:\ prompt, type `ipconfig` and press the **Enter** key.  
*The IP address displays.*
3. Write down the IP address so you can use it when configuring the Max Web Manager.

### 3.3.2 Configuring the Web Manager for Max Devices

#### 3.3.2.1 Network Configuration Settings

#### You will need:

- ♦ The IP address of the PC/server on which the Max PVN software resides  
(See Section 3.3.1, **Obtaining the Max PVN Server IP Address**)

Since the Max PVN performs the roles of all Net2Phone servers, which include an OPAL server, a call control server, and a doorman server, the **Doorman Primary IP** address must be changed to reflect the Max PVN IP address and the value of the **Port** field should be 6800 or higher. These fields are accessed in the Network Configuration page.

#### To adjust your network configuration settings:

1. From the site map or the left side of the page, click the **Network Configuration** link.  
The exact name of the link may vary, depending on the device type. For example, the Max 8 Plus link reads, **Network and Voice Configuration**.  
*The Network Configuration page appears.*

Network Configuration				
Doorman	Primary IP	<input type="text" value="call1.net2phone.com"/>	Port	<input type="text" value="6801"/>
	Secondary IP	<input type="text" value="call2.net2phone.com"/>	Port	<input type="text" value="6801"/>
Client	TCP Start Port	<input type="text" value="4000"/>	UDP Start Port	<input type="text" value="21000"/>
	Opal Start Port	<input type="text" value="7000"/>	NIC	<input type="checkbox"/> Use NIC <input type="button" value="View/Change NIC"/>

Figure 4 – Network Configuration Table

2. In the **Doorman Primary IP** field, delete the default contents and enter the Max PVN IP.
3. Check the **Port** field to confirm that the value is 6800 or higher. If it is not, enter 6800 into the Port field.
4. Click the **Save** button at the bottom of the page to save your changes. You will have to reboot to apply the modified value.

**3.3.2.2 Account Configuration Settings**

The next step in preparing your Max PVN network is to add the local account information (i.e., extension numbers) defined when you set up the Max PVN.

**You will need:**

- ♦ The local account number(s) for this device, as defined in the Max PVN

**To adjust your account configuration settings:**

1. From the site map or the left side of the page, click the **Account Configuration** link. *The Account Configuration page appears.*

Port	Account	PIN	Login (for Max to Max calling)	Announce Account Balance			Login State	FAX Only
				off	dollar	minutes		
1	1000	1000	<input checked="" type="radio"/> Y <input checked="" type="radio"/> N	<input type="checkbox"/>	<input checked="" type="checkbox"/>	<input type="checkbox"/>	LOGIN	<input type="checkbox"/> Y <input checked="" type="checkbox"/> N
2	1001	1000	<input checked="" type="radio"/> Y <input checked="" type="radio"/> N	<input type="checkbox"/>	<input checked="" type="checkbox"/>	<input type="checkbox"/>	LOGIN	<input type="checkbox"/> Y <input checked="" type="checkbox"/> N
3	1002	1000	<input checked="" type="radio"/> Y <input checked="" type="radio"/> N	<input type="checkbox"/>	<input checked="" type="checkbox"/>	<input type="checkbox"/>	LOGIN	<input type="checkbox"/> Y <input checked="" type="checkbox"/> N
4	1003	1000	<input checked="" type="radio"/> Y <input checked="" type="radio"/> N	<input type="checkbox"/>	<input checked="" type="checkbox"/>	<input type="checkbox"/>	LOGIN	<input type="checkbox"/> Y <input checked="" type="checkbox"/> N
5			<input type="checkbox"/> Y <input checked="" type="radio"/> N	<input type="checkbox"/>	<input checked="" type="checkbox"/>	<input type="checkbox"/>	LOGOUT	<input type="checkbox"/> Y <input checked="" type="radio"/> N
6			<input type="checkbox"/> Y <input checked="" type="radio"/> N	<input type="checkbox"/>	<input checked="" type="checkbox"/>	<input type="checkbox"/>	LOGOUT	<input type="checkbox"/> Y <input checked="" type="radio"/> N
7			<input type="checkbox"/> Y <input checked="" type="radio"/> N	<input type="checkbox"/>	<input checked="" type="checkbox"/>	<input type="checkbox"/>	LOGOUT	<input type="checkbox"/> Y <input checked="" type="radio"/> N
8			<input type="checkbox"/> Y <input checked="" type="radio"/> N	<input type="checkbox"/>	<input checked="" type="checkbox"/>	<input type="checkbox"/>	LOGOUT	<input type="checkbox"/> Y <input checked="" type="radio"/> N

**Figure 5 – Account Information Table**

2. In the appropriate **Port** row, enter the local account number and PIN that you are assigning to this device.
3. In the **Login** field, click the “Enabled” radio button for all ports that will receive calls.
4. Click the **Save Changes** button at the bottom of the page to save your changes. You will have to reboot to apply the modified value.

Using the Max PVN's Account Setup page, you can configure an extension number (local account number) and PIN to correspond with a Net2Phone account number. For intranet calls within the private network, the PVN uses the extension number, but for Internet or PSTN calls, the Max PVN will use the Net2Phone account number.

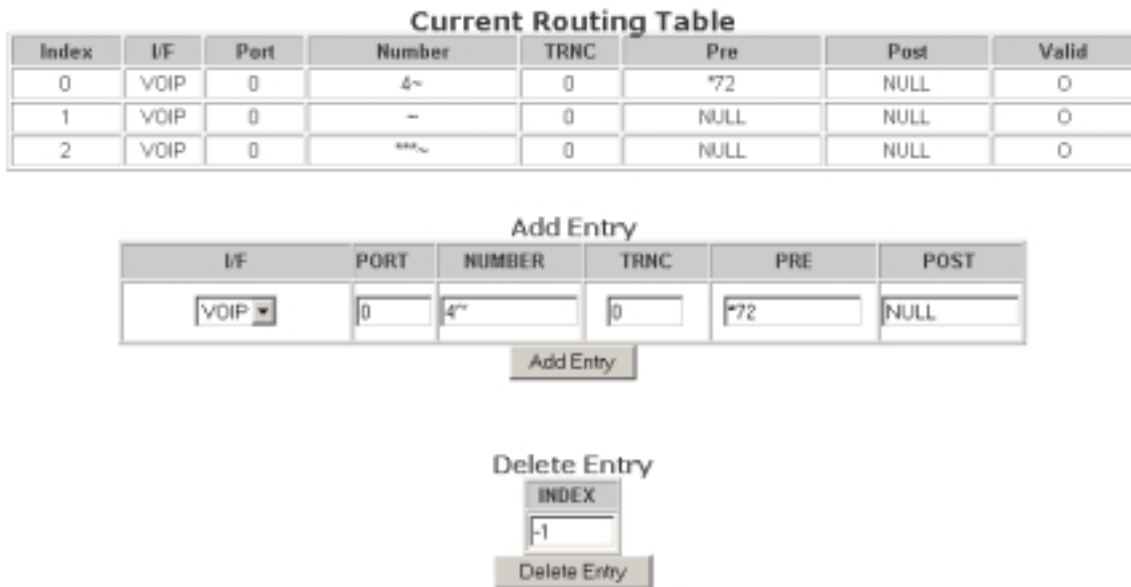
**3.3.2.3 Routing Table Configuration Settings**

The last step in preparing your Max PVN network is to configure the routing table. This is helpful for simplifying Max-to-Max calling by directing the PVN to insert the \*72 prefix (which indicates to the PVN that it's an intranet call) before the dialed extension numbers. Because the PVN does this automatically, callers do not have to dial the prefix before each call.

**To adjust your routing table configuration settings:**

1. From the site map or the left side of the page, click the **Routing Table Configuration** link.

*The Routing Table Configuration page appears.*



**Figure 6 – Routing Configuration Table**

2. In the Add Entry section of the page, click the **I/F** dropdown menu and select VoIP.
3. In the **Logical Port** field, type 0 (zero).
4. In the **Number** field, enter the first digit of the local account numbers you assigned, followed by the ~ symbol. For example, if the extension numbers you assigned begin with the number "4," you would enter 4~ into the Number field.
5. In the **Trnc** field, leave the default of 0 (zero), because no part of the local account number should be truncated.
6. In the **Pre** field, type the dialing prefix of \*72, which indicates a box-to-box call.
7. In the **Post** field, leave the default of NULL, since no digits should be added after the local account number.
8. Click the **Add Entry** button at the bottom of the page to save your changes. You will have to reboot to apply the modified value.

### 3.3.3 Configuring the Web Manager for the IP Phone

#### 3.3.3.1 Net2Phone Configuration Settings

**You will need:**

- ♦ The IP address of the PC/server on which the Max PVN software resides (See Section 3.3.1, **Obtaining the Max PVN Server IP Address**)
- ♦ The local account number(s) for this device, as defined in the Max PVN

The Net2Phone Configuration page contains all of the fields that you will need to adjust to set up your Max PVN. Here, you can add the local account information that was defined when you set up the Max PVN. You must also change the Doorman IP address to reflect the Max PVN IP address and confirm that the value of the Port field is 6800 or higher.

**To adjust your Net2Phone configuration settings:**

1. From the site map or the left side of the page, click the **Net2Phone Configuration** link. *The Net2Phone Configuration page appears.*
2. Enter the local account number and PIN that you are assigning to the IP Phone.
3. In the **Login** field, click the “Enabled” radio button.
4. In the **Doorman Primary IP** field, enter the Max PVN IP address.
5. Check the **Port** field to confirm that the value is 6800 or higher. If it is not, enter 6800 into the Port field.
6. Click the **Save** button at the bottom of the page to save your changes. You will have to reboot to apply the modified values.

## 3.4 Backing Up Your Max PVN Database

It is a good idea to back up your Max PVN database manually in the event that the active database is damaged or lost for any reason. Optimally, you should back up your database once per day, but at the very least, you should perform the backup once per week.

**To backup your Max PVN database:**

1. Open Windows Explorer and navigate to the C:\ PVN\mysql\data\ip\_finder\_data folder.
2. Copy all files in the folder to a designated folder on a backup PC or onto a CD.

**To restore your Max PVN database:**

1. Open Windows Explorer and navigate to the backup PC or the CD drive.
2. Copy all files from the backup PC or CD to the C:\ PVN\mysql\data\ip\_finder\_data folder.

---

## 4.0 Using the Max PVN Software

---

This section covers the Max PVN interface and each menu's features:

- ♦ The Max PVN Home Page
  - Max PVN Menu System
  - System Information
- ♦ Common Page Elements
- ♦ Account Menu
  - Account Status Page
  - Account Setup Page
- ♦ Device Menu
  - Device Status Page
  - Device Setup Page
- ♦ Statistics Menu
- ♦ System Menu

---

### 4.1 The Max PVN Home Page

---

The site map on the Max PVN's Home page provides access to each configuration page. You can also access the menus from the menu bar at the top of each page by moving your pointer over the menu name. The menu name box changes color and a dropdown menu appears below it. Select the desired page by clicking one of the menu options.

---

#### 4.1.1 Max PVN Menu System

---

The Max PVN menu system provides an entry point to all account information, configuration settings, device settings, and call statistics.

The following describes each menu:

1. **Account Menu** – enables you to add and delete accounts, as well as view the status of current accounts.
  - Account Status
  - Account Setup
2. **Device Menu** – enables you to add and delete Max devices in the Max PVN and view the status of the Max devices
  - Device Status
  - Device Setup
3. **Statistics** – enables you to search the Max PVN's call history, as well as view the daily and monthly statistics.
  - Call History
  - Daily Statistics
  - Monthly Statistics

- 4. System Setup** – enables you to enter the configuration settings, change the password used to access the Max PVN, and enter or change the serial or license numbers.
- Configuration
  - Change Password
  - License
  - Logout

---

### 4.1.2 System Information

---

At the bottom of the Max PVN Home page, you can view System Information about the Max PVN software.

- ◆ **Version** – Displays the firmware version of the installed Max PVN software.
- ◆ **Build Time** – Displays the software version build date.
- ◆ **Call / Account** – Displays the number of concurrent calls and the number of accounts available to use with this license, respectively.

---

## 4.2 Common Page Elements

---

Each page contains its own set of information, but there are some common buttons that appear on most pages.

When you view a page that contains more information than can be displayed on one page, the Max PVN creates additional pages.

**To move from page to page, use the following buttons:**

- ◆ **Prev** button – Moves you one page back. Inactive (grayed out) if there is only one page of information displayed.
- ◆ **Next** button – Moves you one page ahead. Inactive (grayed out) if there is only one page of information displayed.
- ◆ **Go Page** button – Moves you to the page you select from the dropdown menu. Appears only when there is more than one page of information displayed.

**To view the most recent information on the current page, use the following button:**

- ◆ **Refresh** button – Updates the screen to show the most current information.

## 4.3 Account Menu

This section covers the following topics:

- ♦ Account Status Page
  - Page Elements
- ♦ Account Setup Page
  - Page Elements
  - Adding an Account
  - Deleting an Account
  - Editing an Account

### 4.3.1 Account Status Page

Using this page, you can view the status of your Net2Phone accounts.

User : root  
[Logout](#)

Home   Account ▾   Device ▾   Statistics ▾   System ▾

## Account Status

Account List						
Local Account	N2P Account	Proxy	Login	Call Status	IP	Port
1000	123456789	OFF	LOCAL	IDLE	xxx.xxx.xx.xx	7010
1001	234567890	ON	N2P	IDLE	xxx.xxx.xx.xxx	7000
1002	345678901	ON	N2P	IDLE	xxx.xxx.xx.xxx	7004
1003	456789012	ON	N2P	BUSY(N2P)	xxx.xxx.xx.x	7008
1004	567890123	ON	N2P	IDLE	xxx.xxx.xx.xx	7000
1005	678901234	ON				
1006	789012345	ON				
1007	890123456	ON				
1008	901234567	ON				
1009	123456789	ON				
1010	123456789	ON				

Prev
Next
Refresh

Figure 7 – Account Status Page

#### 4.3.1.1 Account List Table

- ♦ **Local Account** – Displays the registered number of the local account (i.e., extension number); can be used only on intranet calls (within the private network).
- ♦ **Net2Phone Account** – Displays the registered number of the Net2Phone accounts; can be used when making an Internet or PSTN call.

- ♦ **Proxy** –
  - **OFF** – This type of account makes only intranet calls (within the private network); it cannot make any Internet or PSTN calls, even when using a Net2Phone account.
  - **ON** – This type of account makes intranet, Internet, and PSTN calls.
  - **OG only** – This type of account makes only outgoing intranet, Internet, and PSTN calls.
- ♦ **Login** – Displays the login status of the account. If this field is empty, this account not logged in Max PVN.
  - **LOCAL** – The account is logged into the Max PVN only (not on the Net2Phone server).
  - **N2P** – The account is logged into both the Max PVN and Net2Phone server.
- ♦ **Call Status** – Shows the status of the call.
  - **IDLE** – Indicates that the account is idle, or not in use.
  - **BUSY (LOCAL)** – Indicates that the account is on an intranet call.
  - **BUSY (Net2Phone)** – Indicates that the account is on an Internet or PSTN call.
- ♦ **IP** – Displays the IP address of the account that is logged in.
- ♦ **Port** – Displays the port number of the account logged in.

The Max PVN determines whether to use the local account or the Net2Phone account. If the user makes an intranet call (within the private network), the local account number is used. If the user makes an Internet or PSTN call, the Net2Phone account is used.

### 4.3.2 Account Setup Page

The Account Setup page offers functions such as adding and deleting accounts in the Max PVN.

**MAX Private Voice Network** User : root [Logout](#)

Home Account Device Statistics System

## Account Setup

Account List						
Local Account	Local PIN	Proxy	N2P Account	N2P PIN	Edit	<input type="checkbox"/>
1000	1000	OFF			Edit	<input type="checkbox"/>
1001	1000	ON	123456789	3869	Edit	<input type="checkbox"/>
1002	1000	ON	234567890	3869	Edit	<input type="checkbox"/>
1003	1000	ON	345678901	3869	Edit	<input type="checkbox"/>
1004	1000	ON	456789012	2858	Edit	<input type="checkbox"/>
1005	1000	ON	567890123	6603	Edit	<input type="checkbox"/>
1006	1000	ON	678901234	6603	Edit	<input type="checkbox"/>
1007	1000	ON	789012345	3869	Edit	<input type="checkbox"/>
1008	1000	ON	890123456	3869	Edit	<input type="checkbox"/>
1009	1000	ON	901234567	6603	Edit	<input type="checkbox"/>
1010	1000	ON	123456789	6603	Edit	<input type="checkbox"/>

Prev Next Delete

### Add Account

Local Account :  INC Local PIN :  NO Proxy : ON

N2P Account :  N2P PIN :  Count : 1

Add

Figure 8 – Account Setup Page

#### 4.3.2.1 Account List Table

- ♦ **Local Account** – Displays the number of the local account (i.e., extension number); can be used only on intranet calls (within the private network).
- ♦ **Local PIN** – Displays the PIN number associated with the local account (i.e., extension number).
- ♦ **Proxy** – Displays the proxy mode.
  - **OFF** – This type of account can use only intranet calls; it cannot make any Internet or PSTN calls, even when using a Net2Phone account.

- **ON** – This type of account makes intranet, Internet, and PSTN calls.
- **OG only** – This type of account makes only outgoing intranet, Internet, and PSTN calls.
- ◆ **N2P Account** – Displays the Net2Phone account number.
- ◆ **N2P PIN** – Displays the PIN number associated with the Net2Phone account number.
- ◆ **Edit** – Allows you to edit the information associated with a particular account.
- ◆ **Del checkbox** – Allows you to select one or more accounts for deletion by clicking in the corresponding check boxes. To delete all the accounts on the current page, click in the checkbox at the top of the column to select all the accounts and then click the **Delete** button.

#### 4.3.2.2 Adding an Account

The Add Account section at the bottom of the screen allows you to add an account to the list. Enter the following information into each field:

- ◆ **Local Account** – Enter the number of the local account.
  - **INC/DEC dropdown menu** – Designate whether you want the account numbers (the number of accounts is defined in the Count field) to increase from the number entered or decrease from the number entered. For example, if you enter 4000 in the Local Account field, 5 in the Count field (indicating that you'd like 5 accounts created), and INC (indicating that you'd like the account numbers to increase), the accounts created will range from 4000 to 4004 (5 accounts). If you had selected DEC instead, the accounts would range from 3996 to 4000 (5 accounts).
- ◆ **Local PIN** – Enter the PIN number associated with the local account.
  - **NO/INC/DEC dropdown menu** – Designate whether you want the PIN numbers for the local accounts (the number of accounts is defined in the Count field) to remain the same for all accounts created, increase, or decrease from the PIN number entered. For example, if you enter 1000 as the Local PIN, NO in the dropdown menu (indicating that you'd like the PINs to remain constant), and 5 in the Count field (indicating that you'd like 5 accounts created), the PINs for all 5 accounts will be 1000. If you had selected INC (indicating that you'd like the PIN numbers to increase), the PINs would range from 1000 to 1004 (for the 5 accounts).
- ◆ **Proxy** – Enter the proxy mode for the account. (See options above.)
- ◆ **N2P Account** – Enter the Net2Phone account number. This field is required for accounts with a Proxy setting of ON or OG only. For accounts set to OFF in the Proxy field, this field is inactive.
- ◆ **N2P PIN** – Enter the PIN number associated with the Net2Phone account number. This field is required for accounts with a Proxy setting of ON or OG only. For accounts set to OFF in the Proxy field, this field is inactive.
- ◆ **Count** – Enter the number of accounts you would like added. Each account will be based on the information entered in the other fields, but each account number will increment by one.

To add the account, click the **Insert** button.

---

#### 4.3.2.3 Deleting an Account

---

Select the accounts you would like to delete by clicking the checkbox in the rightmost column for each account you would like to remove. If you are deleting all the accounts on the current page, click the checkbox at the top of the rightmost column, then click the **Delete** button at the bottom of the account list.

---

#### 4.3.2.4 Editing an Account

---

To edit the Local PIN, Proxy, N2P Account, and N2P PIN fields for a particular account, click the Edit button in the row that corresponds with the account you would like to edit. The fields in that row will become editable (except for the local account field). Type any changes into the editable fields, and click the **Write** button in that row to save the change.

If a field is inactive, it means that another field's value is making that field unnecessary. For example, if the Proxy value is **OFF** (intranet calls only), the **N2P Account** & **N2P PIN** fields are inactive because those fields are not applicable. If you change the Proxy to **ON** or **OG only**, the fields will become active and editable.

If you want to edit the Local Account number, you must delete the current account and add a new one with the correct Local Account number.

**NOTE:** Accounts must be edited one at a time.

## 4.4 Device Menu

This section covers the following topics:

- ♦ Device Status Page
  - Page Elements
- ♦ Device Setup Page
  - Page Elements
  - Adding a Device
  - Deleting a Device
  - Editing a Device

### 4.4.1 Device Status Page

The Device Status page allows you to check the status of the devices that are connected to the Max PVN. (For a complete list of devices, both connected and unconnected, use the Device Setup page.)

Device List						
Gateway	Local Account	N2P Account	Proxy	Login	Call Status	Port
MAX 8/16- xxx.xx.xxx.x	1002	123456789	ON	N2P	IDLE	7004
MAX IP10- xxx.xxx.xxx.xx	1001	234567890	ON	N2P	IDLE	7000
MAX 8 Plus- xxx.xx.xxx.x	1003	345678901	ON	N2P	IDLE	7008
	1000		OFF	LOCAL	IDLE	7010
MAX 420- xxx.xx.xxx.xx	1004	456789012	ON	N2P	IDLE	7000

Figure 9 – Device Status Page

#### 4.4.1.1 Device List Table

- ♦ **Gateway** – For registered connected Max gateways, displays the type of Max, along with its IP address. The gateway is automatically registered when the account in the gateway makes a call. You can also manually register via the **Device Setup** page.
- ♦ **Local Account** – Displays the registered number of the local account (i.e., extension number); can be used only on intranet calls (within the private network).
- ♦ **Net2Phone Account** – Displays the registered number of the Net2Phone accounts; can be used when making an Internet or PSTN call.

- ♦ **Proxy** –
  - **OFF** – This type of account makes only intranet calls (within the private network); it cannot make any Internet or PSTN calls, even when using a Net2Phone account.
  - **ON** – This type of account makes intranet, Internet, and PSTN calls.
  - **OG only** – This type of account makes only outgoing intranet, Internet, and PSTN calls.
- ♦ **Login** – Displays the login status of the account. If this field is empty, this account not logged in Max PVN.
  - **LOCAL** – The account is logged into the Max PVN only (not on the Net2Phone server).
  - **N2P** – The account is logged into both the Max PVN and Net2Phone server.
- ♦ **Call Status** – Shows the status of the call.
  - **IDLE** – Indicates that the account is idle, or not in use.
  - **BUSY (LOCAL)** – Indicates that the account is on an intranet call.
  - **BUSY (Net2Phone)** – Indicates that the account is on an Internet or PSTN call.
- ♦ **Port** – Displays the port number of the account logged in.

### 4.4.2 Device Setup Page

The Device Setup Page offers functions such as adding and deleting accounts in the Max PVN and allows you to view all the devices you entered into the Max PVN, regardless of whether they're connected.

**MAX Private Voice Network** User : root  
 Logout

Home Account Device Statistics System

## Device Setup

Device List				
IP	Model	Description	Edit	<input type="checkbox"/>
XXX.XX.XXX.X	MAX 8		Edit	<input type="checkbox"/>
XXX.XXX.XXX.XX	MAX 8/16		Edit	<input type="checkbox"/>
XXX.XX.XXX.X	MAX IP10		Edit	<input type="checkbox"/>
XXX.XX.XXX.X	MAX IP10		Edit	<input type="checkbox"/>
XXX.XX.XXX.XX	MAX 8 Plus		Edit	<input type="checkbox"/>
XXX.XX.XXX.X	MAX 420		Edit	<input type="checkbox"/>
XXX.XX.XXX.X	MAX 4		Edit	<input type="checkbox"/>
XXX.XXX.XXX.X	MAX IP10		Edit	<input type="checkbox"/>
XXX.XX.XXX.X	MAX 4	Max 4 behind Linksys	Edit	<input type="checkbox"/>
XXX.XX.XXX.X	MAX 4		Edit	<input type="checkbox"/>
XXX.XX.XXX.XX	MAX IP10	Srinivas IP Phone	Edit	<input type="checkbox"/>

Prev Next Delete

### Add Device

IP :  Model : MAX 8 Description :

Add

Figure 10 – Device Setup Page

---

#### 4.4.2.1 Device Setup Table

---

- ♦ **IP** – Displays the Max gateway's IP address.
- ♦ **Model** – Displays the Max model.
- ♦ **Description** – Displays information about the Max gateway, such as its physical location or the name of the person who owns the device. If this field is empty, it will be populated by the contents of the Gateway field from the **Device Status** page (model name and IP address).
- ♦ **Edit** – Allows you to edit the Description information associated with a particular device. **NOTE:** If you want to edit the IP address for a Max gateway, you must delete the current device and add a new device with the correct IP address.
- ♦ **Del checkbox** – Allows you to select one or more accounts for deletion by clicking in the corresponding check boxes. To delete all the accounts on the current page, click in the checkbox at the top of the column to select all the accounts and then click the **Delete** button.

---

#### 4.4.2.2 Adding a Device

---

The entry fields at the bottom of the screen allow you to add a device to the list. Enter the following information into each field:

- ♦ **IP** – Enter the Max gateway's IP address.
- ♦ **Model** – Enter the target Max model.
- ♦ **Description** – Enter additional information about the Max gateway, such as its physical location or the name of the person who owns the device. If this field is left empty, the **Device Setup** page will display the contents of the **Gateway** field from the **Device Status** page (model name and IP address).

To add the device, click the **Add** button.

---

#### 4.4.2.3 Deleting a Device

---

Select the devices you would like to delete by clicking the checkbox in the rightmost column for each account you would like to remove. If you are deleting all the accounts on the current page, click the checkbox at the top of the rightmost column, then click the **Delete** button at the bottom of the device list.

---

#### 4.4.2.4 Editing a Device

---

To edit a particular device, click the **Edit** button in the row that corresponds with the device you would like to edit. The Description field in that row will become editable. Type any changes into the field, and click the **Write** button in that row to save the change.

**NOTE:** Devices must be edited one at a time.

## 4.5 Statistics Menu

This section covers the following topics:

- ♦ Call History Page
  - Search Criteria Page
- ♦ Daily Statistics Page
  - Search Criteria Fields
- ♦ Monthly Statistics Page
  - Search Criteria Fields

### 4.5.1 Call History Page

The Call History page allows you to search the Max PVN's call history based on the criteria that you define.

**MAX Private Voice Network** User : root  
Logout

Home Account Device Statistics System

### Call History

**Search Criteria**

Local Account	N2P Account	Start Time	End Time	Calling IP	Called IP	Destination
		03/18/2003	03/18/2003			

Sort by Time Descending Search

**Search Results**

Time	Local Account	N2P Account	Calling IP	Called IP	Destination	Duration	Stat
2003-03-18 16:01:28	9876543210	123456789	XXX.XX.XXX.X	XXX.XX.XXX.X		00:00:08	0
2003-03-18 15:56:52	1001	123456789	XXX.XX.XXX.X	XXX.XX.XXX.X		00:00:11	0
2003-03-18 15:55:51	9876543210	123456789	XXX.XX.XXX.X	0.0.0.0		00:00:00	8
2003-03-18 15:55:33	9876543210	123456789	XXX.XX.XXX.X	0.0.0.0		00:00:00	8
2003-03-18 15:42:01	1001	123456789	XXX.XX.XXX.X	XXX.XX.XXX.X		00:00:08	0

Prev Next

Figure 11 – Call History Page

#### 4.5.1.1 Search Criteria Page

The fields at the top of the page allow you to set the criteria to search the Max PVN's call history. For each field, you can enter a specific value that you would like searched. The available fields are:

- ♦ **Local Account** – Searches by the registered number of the local account.
- ♦ **N2P Account** – Searches by the registered number of the Net2Phone accounts.
- ♦ **Start Time** – Defines the beginning of the date range to be searched.

- ♦ **End Time** – Defines the end of the date range to be searched.
- ♦ **Calling IP** – Searches by the IP address of the gateway placing the call.
- ♦ **Called IP** – Searches by the IP address of the gateway receiving the call.
- ♦ **Destination** – Searches by dialed number.
- ♦ **Sort by dropdown menu** – Arranges search results by one of the following key fields:
  - Time
  - Calling IP
  - Called IP
  - Destination
- ♦ **Descending/Ascending dropdown menu** – Arranges the search results in either ascending or descending order.

**NOTE:** If you leave a field empty, the search results will show all field values.

Once all the criteria have been defined, click the **Search** button to display the call history.

In addition to the search fields, the search results also display two additional columns:

- ♦ **Duration** – Displays the duration of the call.
- ♦ **Stat** – Displays the End of Call (EOC) factor number; each number corresponds to a specific reason the call ended.

### 4.5.2 Daily Statistics Page

The Daily Statistics page displays call statistics based on the criteria you define for a particular day.

User : root  
[Logout](#)

Home Account Device Statistics System

## Daily Statistics

Search Criteria				
Date	Local Account	N2P Account	Device	Graph
03/28/2003	Total	Total	Total	None

[Search](#)

Search Results									
Hours	Local Calls			N2P Calls			Total Calls		
	# of calls	total time	average time	# of calls	total time	average time	# of calls	total time	average time
0~1	0	00:00:00	00:00:00	0	00:00:00	00:00:00	0	00:00:00	00:00:00
1~2	0	00:00:00	00:00:00	0	00:00:00	00:00:00	0	00:00:00	00:00:00
2~3	0	00:00:00	00:00:00	0	00:00:00	00:00:00	0	00:00:00	00:00:00
3~4	0	00:00:00	00:00:00	0	00:00:00	00:00:00	0	00:00:00	00:00:00
4~5	0	00:00:00	00:00:00	0	00:00:00	00:00:00	0	00:00:00	00:00:00
5~6	0	00:00:00	00:00:00	0	00:00:00	00:00:00	0	00:00:00	00:00:00
6~7	0	00:00:00	00:00:00	0	00:00:00	00:00:00	0	00:00:00	00:00:00
7~8	0	00:00:00	00:00:00	0	00:00:00	00:00:00	0	00:00:00	00:00:00
8~9	0	00:00:00	00:00:00	0	00:00:00	00:00:00	0	00:00:00	00:00:00
9~10	0	00:00:00	00:00:00	0	00:00:00	00:00:00	0	00:00:00	00:00:00
10~11	0	00:00:00	00:00:00	0	00:00:00	00:00:00	0	00:00:00	00:00:00
11~12	0	00:00:00	00:00:00	0	00:00:00	00:00:00	0	00:00:00	00:00:00
12~13	0	00:00:00	00:00:00	2	00:04:31	00:02:15	2	00:04:31	00:02:15
13~14	1	00:00:23	00:00:23	0	00:00:00	00:00:00	1	00:00:23	00:00:23
14~15	0	00:00:00	00:00:00	0	00:00:00	00:00:00	0	00:00:00	00:00:00
15~16	0	00:00:00	00:00:00	0	00:00:00	00:00:00	0	00:00:00	00:00:00
16~17	0	00:00:00	00:00:00	1	00:00:06	00:00:06	1	00:00:06	00:00:06
17~18	0	00:00:00	00:00:00	0	00:00:00	00:00:00	0	00:00:00	00:00:00
18~19	0	00:00:00	00:00:00	0	00:00:00	00:00:00	0	00:00:00	00:00:00
19~20	0	00:00:00	00:00:00	0	00:00:00	00:00:00	0	00:00:00	00:00:00
20~21	0	00:00:00	00:00:00	0	00:00:00	00:00:00	0	00:00:00	00:00:00
21~22	0	00:00:00	00:00:00	0	00:00:00	00:00:00	0	00:00:00	00:00:00
22~23	0	00:00:00	00:00:00	0	00:00:00	00:00:00	0	00:00:00	00:00:00
23~24	0	00:00:00	00:00:00	0	00:00:00	00:00:00	0	00:00:00	00:00:00
<b>Total</b>	<b>1</b>	<b>00:00:23</b>	<b>00:00:23</b>	<b>3</b>	<b>00:04:37</b>	<b>00:01:32</b>	<b>4</b>	<b>00:05:00</b>	<b>00:01:15</b>

Figure 12 – Daily Statistics Page

---

#### 4.5.2.1 Search Criteria Fields

---

The fields at the top of the page allow you to set the criteria to search the Max PVN's call history for a designated day. For each field, you can enter a specific value that you would like searched. The available fields are:

- ♦ **Date** – Searches by a designated date.
- ♦ **Local Account** – Searches by the registered number of the local account you select from the dropdown menu or all accounts (Total).
- ♦ **Net2Phone Account** – Searches by the registered number of the Net2Phone account you select from the dropdown menu or all accounts (Total).
- ♦ **Device** – Searches for calls by a particular device you select from the dropdown menu or all devices (Total).
- ♦ **Graph** – Defines how you would like the search results to be presented.
  - None – No graph
  - Line – Line graph
  - Hbar – Horizontal bar graph
  - Vbar – Vertical bar graph
  - Vbar 3D – Three-dimensional vertical bar graph

Once all the criteria have been defined, click the **Search** button to display the daily statistics.

The search results table is broken into 3 sections: Local Calls, N2P Calls, and Total Calls. In each section, the table displays the number of calls, the total time of the call, and the average time of the call for each hour of the day.

### 4.5.3 Monthly Statistics Page

The Monthly Statistics page displays call statistics based on the criteria you define for a particular month.

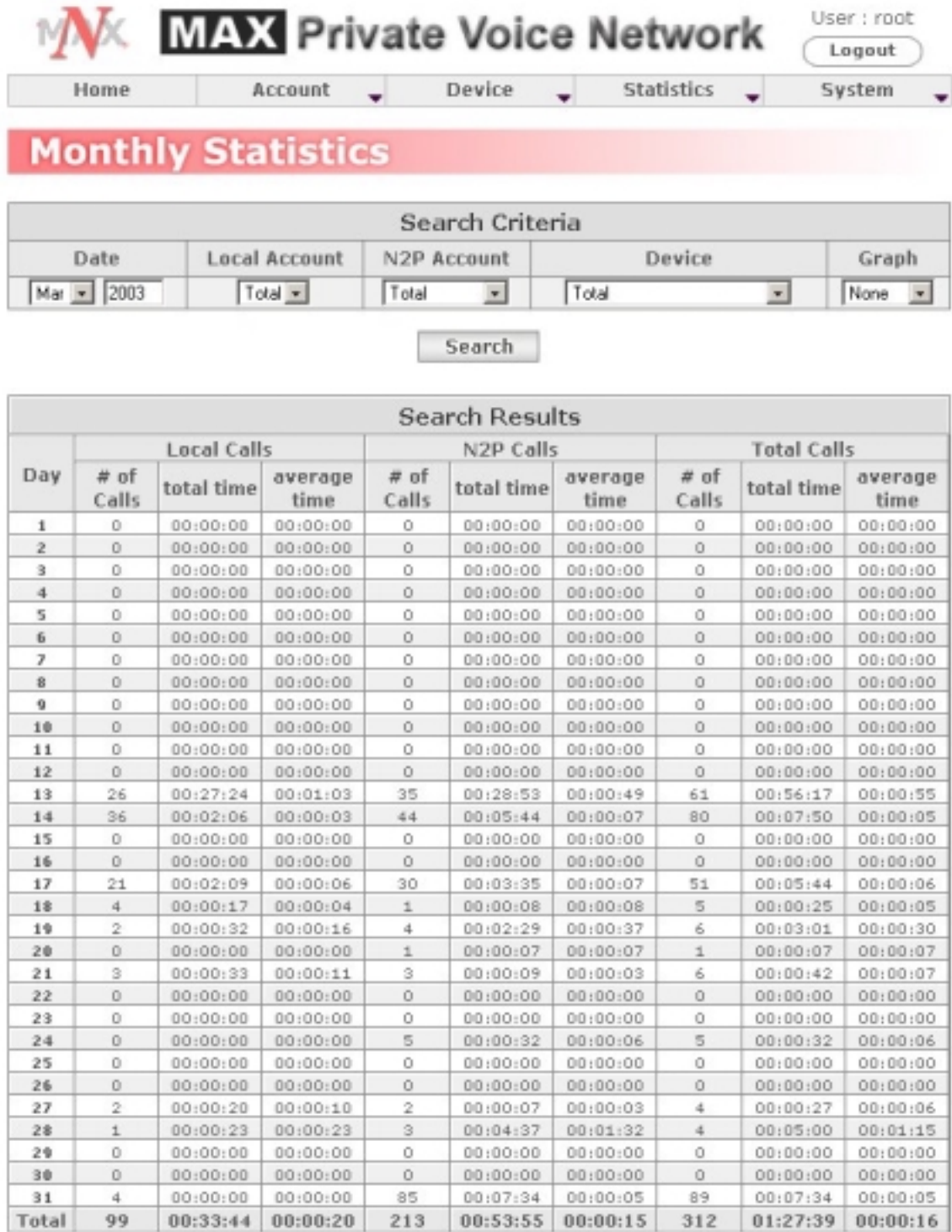


Figure 13 – Monthly Statistics Page

---

#### 4.5.3.1 Search Criteria Fields

---

The fields at the top of the page allow you to set the criteria to search the Max PVN's call history for a designated month. For each field, you can enter a specific value that you would like searched. The available fields are:

- ♦ **Date** – Searches by a designated month and year.
- ♦ **Local Account** – Searches by the registered number of the local account you select from the dropdown menu or all accounts (Total).
- ♦ **Net2Phone Account** – Searches by the registered number of the Net2Phone account you select from the dropdown menu or all accounts (Total).
- ♦ **Device** – Searches for calls by a particular device you select from the dropdown menu or all devices (Total).
- ♦ **Graph** – Defines how you would like the search results to be presented.
  - None – No graph
  - Line – Line graph
  - Hbar – Horizontal bar graph
  - Vbar – Vertical bar graph
  - Vbar 3D – Three-dimensional vertical bar graph

Once all the criteria have been defined, click the **Search** button to display the monthly statistics.

The search results table is broken into 3 sections: Local Calls, N2P Calls, and Total Calls. In each section, the table displays the number of calls, the total time of the call, and the average time of the call for each day of the month.

## 4.6 System Menu

This section covers the following topics:

- ♦ Configuration Page
  - Configuration Fields
- ♦ Change Password Page
  - Change Password Fields

### 4.6.1 Configuration Page

Any of the parameters on the System Configuration page can be modified by simply entering the desired values into the respective boxes, as displayed in Figure 14 below.

User : admin  
[Logout](#)

Home Account Device Statistics System

## Configuration

**PVN Port Configuration**

Doorman Port :

Call Controller Port :

OPAL Port :

**N2P Server Configuration**

N2P Doorman 1 Address :

N2P Doorman 1 Port :

N2P Doorman 2 Address :

N2P Doorman 2 Port :

Doorman Connection Port :

OPAL Start Port :

**History / Statistics Configuration**

Days to keep data (1~999) :

**NAT Configuration**

PVN is behind a NAT :

Figure 14 – Configuration Page

---

#### 4.6.1.1 Configuration Fields

---

- ♦ **PVN Port Configuration**
  - Doorman Port
  - Call Controller Port
  - OPAL Port
- ♦ **N2P Server Configuration**
  - N2P Doorman 1 Address
  - N2P Doorman 1 Port
  - N2P Doorman 2 Address
  - N2P Doorman 2 Port
  - OPAL Start Port

The Port Number parameters must be changed to permit access when a LAN's firewall permits only pre-assigned TCP/UDP port numbers to be used.

- ♦ **History / Statistics Configuration**
  - Days to keep data (1-999)
- ♦ **NAT Configuration**
  - PVN is behind a NAT – If set to “No”, Max PVN uses a public address; if set to “Yes”, Max PVN is behind a NAT.

Once all the information has been entered, click the **Update** button to update the configuration settings. Click the **Default** button to load the default configuration settings.

**CAUTION:** This command causes all of your configuration settings and parameter values to be deleted.

## 4.6.2 Change Password Page

The default user ID and password for the Max PVN are **root** and **Net2Phone**, respectively. For security reasons, it is a good idea to change the password to limit administrative access. From the System Menu, click the **Change Password** link.

The screenshot shows the web interface for changing a password. At the top, there is a navigation bar with 'Home', 'Account', 'Device', 'Statistics', and 'System' menus. A 'Logout' button is visible next to the user name 'admin'. A prominent red banner displays 'Change Password'. Below this, a form titled 'Change Password [ user : admin ]' contains three text input fields labeled 'Old Password', 'New Password', and 'Re-type New Password'. An 'Update' button is positioned below the form.

*Figure 15 – Change Password Page*

### 4.6.2.1 Change Password Fields

The Change Password page displays the current user ID so that you know which password you are changing.

- ♦ **Old Password** – Enter the current password.
- ♦ **New Password** – Enter the new password.
- ♦ **Re-type New Password** – Re-enter the new password to confirm it.

Once you have entered information into each field, click the **Update** button to save your new password. Write down your new password and keep it somewhere safe. Remember that you can't access Max PVN if you forget your password.

---

## 5.0 Placing Calls

---

This section covers the steps for placing a call through your device:

- ♦ The Pound Key
- ♦ Placing Calls to the PSTN
  - Placing Calls to Destinations within North America
  - Placing International Calls
- ♦ Max-to-Max Calling

---

### 5.1 The Pound Key

---

The pound key (#) notifies the Max of the end of a dial string. If the pound key is omitted after entering the number to be called, the Max waits three seconds for additional input, then places the call.

---

### 5.2 Placing Calls to the PSTN

---

---

#### 5.2.1 Placing Calls to Destinations within North America

---

Pick up the handset and dial 1 + the area code + the local number, followed by the # key. For example, if the area code is 212 and the local number is 555-6791, you would dial **12125556971#**.

---

#### 5.2.2 Placing International Calls

---

Pick up the handset and dial 011 + the country code + the city code + the local number, followed by the # key. For example, if the country code is 9, the city code is 81 and the local number is 223-4567, you would dial **0119812234567#**.

---

### 5.3 Max-to-Max Calling

---

Pick up the handset and dial \*72 + the remote Max's port number, followed by the # key. For example, if you are calling from a telephone in New York City to a telephone in Los Angeles, and the account number assigned to the remote Max's port is 1234567890, you would dial **\*721234567890#**.

---

## 6.0 Appendix A – Obtaining the License Key and Serial Number (Beta Version Only)

---

This procedure is intended for those using the beta version of the Max PVN. The license key and serial number are required for you to gain access to the software.

1. Open a browser window and enter the Max PVN IP address into your browser's URL field.  
*The Max PVN Login page appears.*
2. Enter your user ID and password in the fields in the upper right corner of the screen, and click the **OK** button.  
*The Input Serial and License Number screen appears.*
3. Open a DOS prompt window by going to Start: Programs: Accessories: Command Prompt.
4. Navigate to the directory where you stored the Max PVN files, including "gen-0331.exe."
5. Once you're in the folder where the Max PVN files are located, type **gen 0331.exe** and press the **Enter** key.
6. At the prompt, enter your PC's MAC address without dashes and then press the **Enter** key. For example, type **000040C2A54** followed by the **Enter** key.
7. The License Key and Serial Number values will appear on the DOS screen.
8. Copy and paste each number into the appropriate Max PVN field and then click the **Update** button.

You are now granted access to the Max PVN screens.

## 7.0 Index

- A**
- Account Configuration Settings, 14
  - Account Menu, 19
  - Account Setup Page, 21
  - Account Status Page, 19
  - Adding a Device, 10, 28
  - Adding an Account, 10, 22
- B**
- backup data
    - restoring, 4
  - browser, 11
  - BUSY (LOCAL)
    - Call Status Setting, 20, 26
  - BUSY (Net2Phone)
    - Call Status Setting, 20, 26
- C**
- Call Controller Port
    - Port Configuration Setting, 36
  - Call History Page, 29
  - Call Status
    - Account Status Page, 20
    - Device Status Page, 26
  - Called IP
    - Call History Page, 30
  - Calling IP
    - Call History Page, 30
  - Capabilities
    - Max PVN, 2
  - Change Password Page, 37
  - Configuration page
    - Web Manager, 35
  - Configuration Page, 35
  - Count
    - Adding an Account, 23
- D**
- Daily Statistics Page, 31
  - Date
    - Daily Statistics Page, 32
    - Monthly Statistics Page, 34
  - Del checkbox, 22, 28
  - Deleting a Device, 28
  - Deleting an Account, 23
  - Description
    - Adding a Device, 28
    - Device Setup Page, 28
  - Destination
    - Call History Page, 30
  - Device
    - Daily Statistics Page, 32
    - Monthly Statistics Page, 34
  - Device Menu, 24
  - Device Setup Page, 27
  - Device Status Page, 24
  - Doorman Port
    - Port Configuration Setting, 36
- E**
- Edit button, 22, 28
  - Editing a Device, 28
  - Editing an Account, 23
  - End Time
    - Call History Page, 30
- F**
- Firewall, 7, 36
- G**
- Gateway
    - Device Status Page, 24
  - Go Page button, 18
  - Graph
    - Daily Statistics Page, 32
    - Monthly Statistics Page, 34
- H**
- History / Statistics Configuration
    - Configuration Page, 36
    - Home Page, 9
    - Max PVN, 17
- I**
- IDLE
    - Call Status Setting, 20, 26
  - INC/DEC dropdown menu
    - Adding an Account, 22
  - Insert button, 28
  - Installing, 4
  - IP
    - Account Status Page, 20
    - Adding a Device, 28
    - Device Setup Page, 28
  - IP address, 11
  - IP Address
    - Max PVN Server, 12
- L**
- LAN, 36
  - license number
    - logging in, 9
  - LOCAL
    - Login setting, 20
    - Login Setting, 26
  - Local Account
    - Account Setup Page, 21
    - Account Status Page, 19
    - Adding an Account, 22
    - Call History Page, 29
    - Daily Statistics Page, 32
    - Device Status Page, 24
    - Monthly Statistics Page, 34
  - Local PIN
    - Account Setup Page, 21
    - Adding an Account, 22
  - Logging in

Max PVN, 8  
 Max Web Manager, 11  
 Login  
     Account Status Page, 20  
     Device Status Page, 26

**M**

Max Web Manager  
     logging in, 11  
 Max-to-Max Calling, 38  
 Menu System, 17  
 Model  
     Adding a Device, 28  
     Device Setup Page, 28  
 Monthly Statistics Page, 33

**N**

N2P  
     Login setting, 20  
     Login Setting, 26  
 N2P ACC  
     Adding an Account, 23  
 N2P Account  
     Account Setup Page, 22  
 N2P Doorman 1 Address  
     Configuration Setting, 36  
 N2P Doorman 1 Port  
     Configuration Setting, 36  
 N2P Doorman 2 Address  
     Configuration Setting, 36  
 N2P Doorman 2 Port  
     Configuration Setting, 36  
 N2P PIN  
     Account Setup Page, 22  
     Adding an Account, 23  
 N2P Server Configuration  
     Configuration Page, 36  
 NAT Configuration  
     Configuration Page, 36  
 Net2Phone Account  
     Account Status Page, 20  
     Call History Page, 30  
     Daily Statistics Page, 32  
     Device Status Page, 25  
     Monthly Statistics Page, 34  
 Net2Phone Configuration Settings, 16  
 Network Configuration Settings, 12  
 Next button, 18

**O**

OFF  
     Proxy Setting, 20, 22, 26  
 OG only  
     Proxy Setting, 20, 22, 26  
 ON  
     Proxy Setting, 20, 22, 26  
 OPAL Port  
     Port Configuration Setting, 36  
 OPAL Start Port  
     Configuration Setting, 36

**P**

password  
     logging in, 8, 39  
 Placing Calls, 38  
     PSTN, 38  
 Port  
     Account Status Page, 20  
     Device Status Page, 26  
 Port Numbers, 36  
 Pound Key (#), 38  
 Prev button, 18  
 Proxy  
     Account Setup Page, 21  
     Account Status Page, 20  
     Adding an Account, 22  
     Device Status Page, 26  
 proxy server caching, 2  
 PVN Port Configuration  
     Configuration Page, 36

**R**

Refresh button, 18

**S**

serial number  
     logging in, 9  
 Start Time  
     Call History Page, 30  
 Statistics Menu, 29  
 System Information, 18  
 System Menu, 35  
 System Settings, 7

**U**

Uninstalling, 5  
 user ID  
     logging in, 8, 39